

**DK Betjeningsvejledning
GB User Manual**

Udendørs transportabel LED lampe
80036727



VIGTIGT - FØR START!

Sørg for at tjekke at alle delene er
intakte inden brug.

IMPORTANT – BEFORE START!

Make sure to check that all items are
intact before usage.

Indeholder

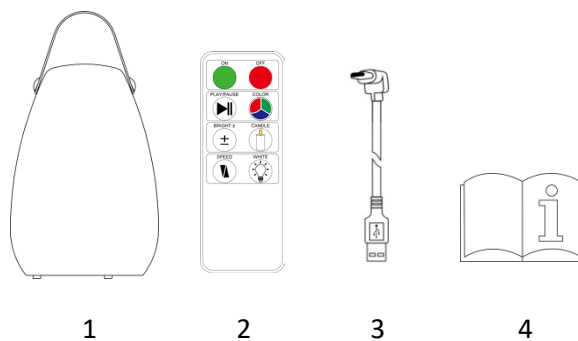
- 1 x Transportabel LED lampe.
- 1 x Fjernbetjening.
- 1 X USB-kabel 0.8 m.
- 1 x Betjeningsvejledning.

Specifikationer

Omgivende temperatur for drift	-14 C til 35 C
LED	RGB+W LED
Batteritype	3.7V 1200mAh Li-ion
Opladningstid	3-4 timer afhængig af opladertype
Arbejdstid/virketid	4-6 timer
Fjernbetjeningens rækkevidde	4-8 meter
IP-vurdering	IPX4

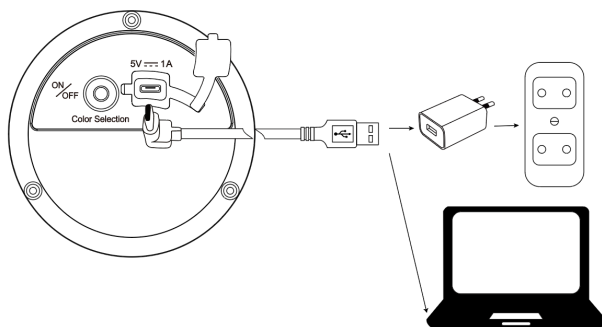
Betjening

- (1) LED lampe
- (2) Fjernbetjening
- (3) USB-kabel
- (4) Betjeningsvejledning



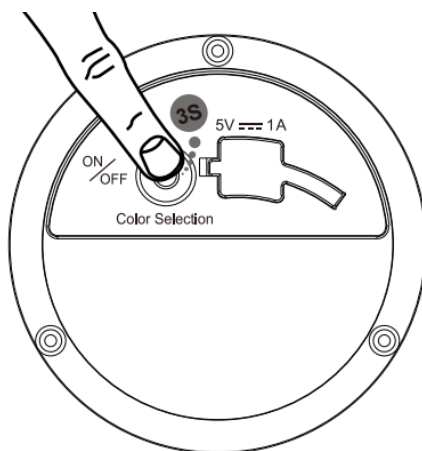
LED lampen skal oplades i mindst 8 timer før brug.

Lampen oplades ved at anvende det medfølgende USB-kabel, som enten stikkes i en computer, tablet eller en DC 5V.



For at tænde LED lampen skal du trykke på **ON/OFF + DIM&COLOR** i 2-3 sekunder.

Ligeledes, trykkes der på **ON/OFF + DIM&COLOR** for at skifte farve.



Anvendelse af fjernbetjening

Før du begynder at anvende produktet og den medfølgende fjernbetjening, skal du fjerne det lille stykke plastik fra batteridækslet.

Når fjernbetjeningen ikke er brug, bedes du placere det lille stykke plastik igen, for at spare på batteriet og for at forlænge dets levetid.

BEMÆRK! LED lampen skal tændes først, inden du aktiverer fjernbetjeningsfunktionen.

Tryk på **ON** knappen for at tænde LED lampen.

Tryk på **OFF** knappen for at slukke LED lampen.

For at skifte farve, tryk da på **PLAY/PAUSE** knappen. Når der trykkes på denne knap, vil LED lampen automatisk skifte farve, men du kan også vælge en permanent farve den skal lyse.

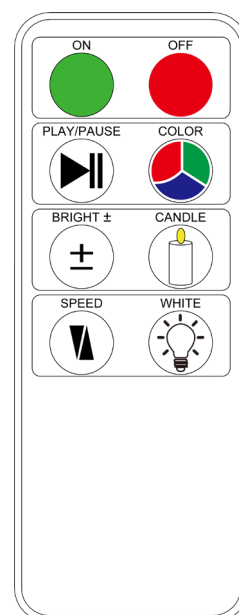
Ønsker man at LED lampen skifter farve i den rækkefølge den er programmeret i, skal man trykke **COLOR** knappen.

Der kan ligeledes reguleres på lysstyrken og det gøres ved at trykke på **BRIGHT** knappen. Der kan vælges imellem 5 niveauer.

Man kan også vælge at trykke på **CANDLE** knappen, trykkes der på denne, vil LED lampen simulere lys, som et levende lys.

Der er ligeledes også muligt at ændre på farten af farveskiftene. Dette virker kun når LED lampen er på **PLAY/PAUSE MODE**. Her kan man, ved at trykke på **SPEED** knappen, sænke eller hæve farten for farveskiftene.

Når lampen lyser hvid, kan man regulere hvor kraftig eller svag den lyse/hvide farve skal være. Dette gøres ved at trykke på **WHITE** knappen.



Sikkerhedsforskrifter

⚠ Fjernbetjeningen og USB-kablet er ikke vandtætte og skal derfor opbevares tørt.

⚠ LED lampen er **IKKE** beregnet til at blive brugt i pools, damme eller andre vådområder.

⚠ LED lampen må **IKKE** oplades i vådområder, sørg derfor altid for at den oplades hvor det er tørt.

⚠ Sørg altid for at slukke for enheden når den ikke er i brug.

⚠ Der må **IKKE** hoppes, sparkes eller siddes på LED lampen.

⚠ LED lampen skal holdes væk fra kemikalier og varme genstande, såsom brændeovne eller lignende.

⚠ Man må **IKKE** forsøge at åbne for LED lampen. Åbner man LED lampen, bortfalder garantien.

⚠ LED lampen skal oplades via en oplader på maksimum 5V. Hvis oplader er over 5V, kan det hænde at batteriet går i stykker.

Vedligeholdelse

Når LED lampen ikke er i brug, sørg da for at den er udenfor børns og solens rækkevidde.

Det anbefales, at produktet efter brug slukkes, renses med rent vand og tørres med en blød klud.

Content

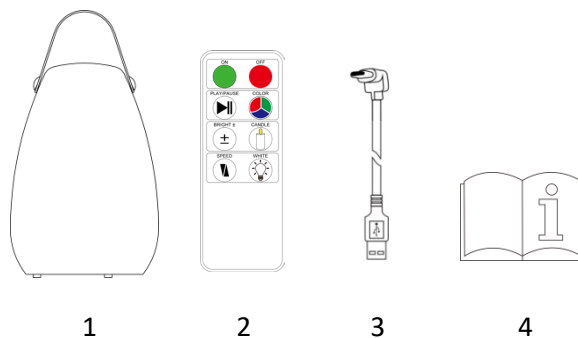
- 1 x Portable LED lamp.
- 1 x Remote control.
- 1 X USB-cable 0.8 m.
- 1 x User manual.

Specifications

Ambient temperature for operation	-14 C to 35 C
LED	RGB+W LED
Battery	3.7V 1200mAh Li-ion
Charging time	3-4 hours depends on power supply
Working time	4-6 hours
Remote control	4-8 meters
IP-Rating	IPX4

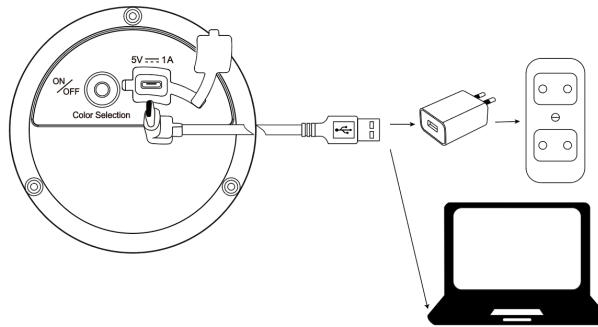
Betjening

- (1) LED lamp
- (2) Remote control
- (3) USB-cable
- (4) User manual



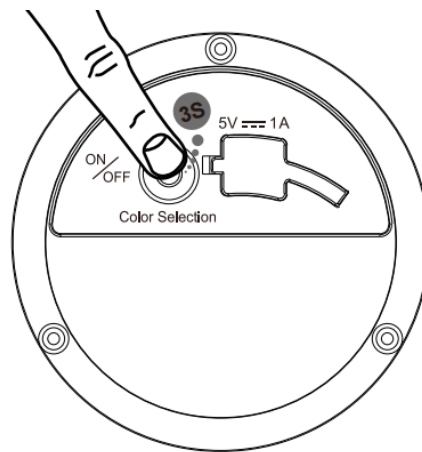
The LED lamp must be charged for at least 8 hours before use.

The LED lamp is charged by using the included USB cable, which is either plugged into a computer, tablet, or a DC 5V.



To switch the LED lamp on, press **ON/OFF + DIM&COLOR** for approximately 2-3 seconds.

Likewise, press **ON/OFF + DIM&COLOR** to change the color settings.



How to use the remote control

Before you start using the product and the supplied remote control, please make sure to remove the small piece of plastic from the battery cover.

When the remote control is not in use, please put the small piece of plastic back in order to save the battery and to extend its lifespan.

NOTE! The LED must be switched on, before you activate the remote-control function.

Press the **ON** button to turn on the LED lamp.

Press the **OFF** button to turn off the LED lamp.

To change the color, press the **PLAY/PAUSE** button. When this button is pressed, the LED lamp will automatically change color. This function also makes it possible for you to choose a permanent color.

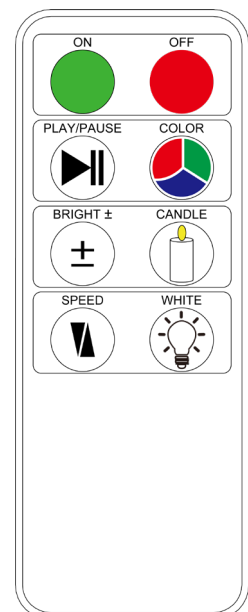
If you want the LED lamp to change color in the order it is programmed in, press the **COLOR** button.

You can also adjust the brightness of the light. This can be done by pressing the **BRIGHT** button. There are 5 levels to choose from.


Another feature is the **CANDLE** button. If you press this button, the LED lamp will simulate light, like a real candle.


It is also possible to change the speed of the color changes. This only works when the LED lamp is on **PLAY/PAUSE MODE**. By pressing the **SPEED** button, you can decrease or increase the speed of the color changes.


When the lamp has a white lighting, you can regulate how strong or weak the light/white color should be. This can be done by pressing the **WHITE** button.





Safety regulations


 Neither of the remote control or the USB cable are waterproofed and must therefore be stored dry.


 The LED lamp is **NOT** intended for use in pools, ponds or other wet areas.


 The LED lamp must **NOT** be charged in wet areas, therefore always ensure that it is charged in dry areas and indoor.

 Always make sure to turn off the device when not in use.

 Do **NOT** jump, kick, or sit on the LED lamp.

 The LED lamp must be kept out of reach from chemicals and hot objects, such as stoves etc.

 Do **NOT** attempt to open the LED lamp. Opening the LED lamp voids the warranty.

 The LED lamp must be charged via a charger of maximum 5V. If the charger exceeds 5V, the battery might break.

Maintenance

When the LED lamp is not in use, make sure it is out of reach for children and the sun.

It is recommended that the product will be switched off after use.

After usage, make sure to wipe the LED lamp with a bit of water and dry the lamp with a soft cloth.

