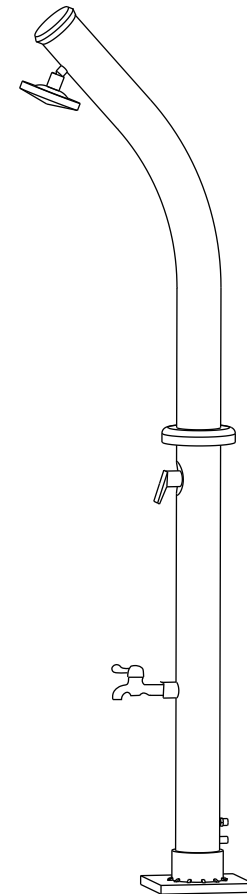
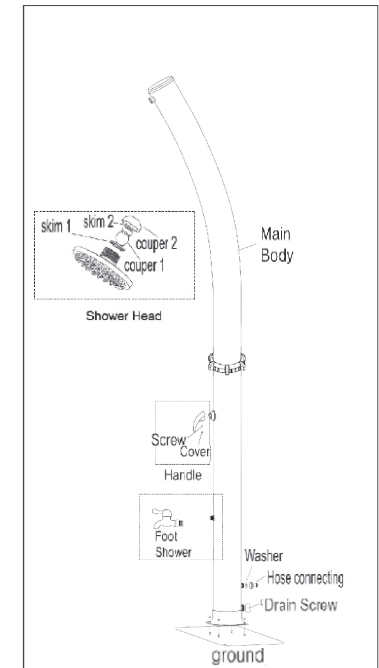

User Manual



Hardware List

NO	Description	QTY
1	Shower head	1
2	Handle	1
3	Hose Connecting	1
4	Teflon	1
5	Setscrew	4
6	Drain Screw	1
7	Foot Shower	1



a.The outer box is damaged.

b.The product is damaged / bent / cracked while you open the box.

c.The parts / accessories / assembly tools are missing.

d.The product is hard to assemble.

e.The instructions are not clear and can not be referred to.

f.The product has functional problems.

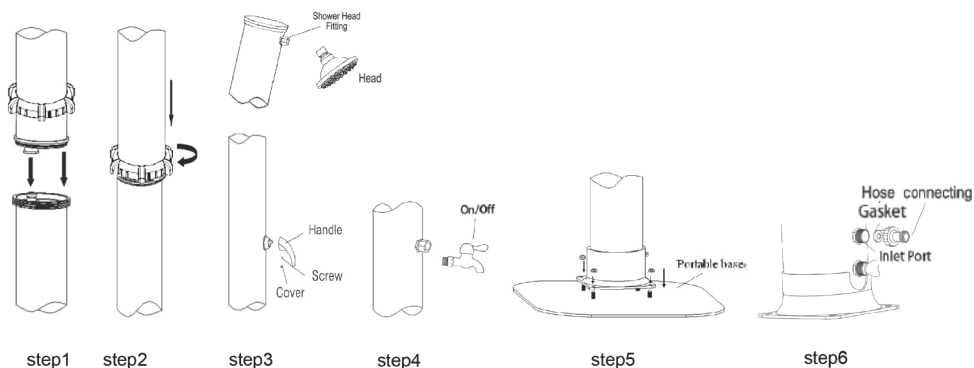
g.Other aspects that you are not satisfied with.

PRODUCT ASSEMBLY

! Check the package contents before getting started !

In order to correctly install and properly use this product, please pay attention to the following cautions.

1. The solar shower must be installed on solid ground (concrete floor) or concrete base to make sure its stabilization and safety for user.
2. The solar shower is equipped with base plate, which has 4 prefabricated holes for screws installation on solid ground or portable base.
3. For easy installation, please separately buy the portable base. Just screw the solar shower to the base and you could enjoy the warm water.
4. Please install the solar shower at the location where has the most sunshine.
5. Please connect the inlet of the solar shower to the water supply system of your house. It would be better to have the solar shower connected to your garden tap first and then to the water supply system.
6. Please pay attention that it is necessary to have a tap installed before the inlet of solar shower.
7. In order to avoid injury caused by scalding water, please follow the steps below.
Before turning on the solar shower, please make sure the valve is set at the cold water position (blue), then gradually rotate it to the position of hot water so as to reach the most comfortable temperature.
8. Warning! In the exposure of intense solar radiation, the temperature of the water in the solar shower may reach 60 or 140 .



Initial set up of the shower

1. Turn and lift shower handle to FULL ON HOT position.
2. Tighten the bottom drain screw, making sure it's sealed and no water leaks.
3. Turn on water supply to garden hose to fill shower. Shower will take about 2~4 minutes to fill. NOTE: Filling tube with valve in hot position ensures no air pockets are trapped in shower. This procedure is used for initial set up only.
4. When water flows from shower head, turn shower handle off. Turning the shower off allows the water to begin heating.
5. Depending on available sunlight and outside temperature, it may take 3 hours or longer to fully heat the water. Using the shower too frequently will yield less heated water. And a recently used shower (that has not been emptied) will take less time.
6. Simply lift the handle to its ON position and you are ready to enjoy your sun-warmed water! NOTE: The faucet connected to garden hose must be turned on for shower to run.
7. Please turn off the water supply after use.

WARNING: IF SHOWER HAS NOT BEEN USED FOR MORE THAN THREE DAYS, WE RECOMMEND RUNNING THE SHOWER FOR 2 MINUTES TO REMOVE STAGNANT WATER. STAGNANT WATER IN WARM ENVIRONMENT CAN PROVIDE A GROWTH ENVIRONMENT FOR HAZARDOUS BACTERIA.

Remark for off-season storage protection:

1. After the pool season, please clean the solar shower with soft cloth.
2. Please close the garden tap which is connected to the inlet of solar shower. And please make the cold and hot water valve in "OPEN" position, then unscrew the bottom drain, to make sure that all water in solar shower can be fully drained out.
3. When the solar shower is in dry and frozen environment, the valve should be set at 'OPEN' position. The damage caused by freezing temperature will not be covered by our warranty.

Warning:

1. The damage caused by muddy water, salt water or freezing temperature will not be covered in our warranty.
2. Wipe shower off after use.
3. DO NOT use the solar shower with base in appalling conditions of heavy winds. Winds may break the balance of the shower and result in damage to people and property. DO NOT climb on or hang from it or stand on the base. Use only as recommended.
4. Please keep small parts, hardware and plastic bags beyond the reach of children.

CoolSplash

Coolsplash A/S | Knullen 22 | DK-5260 Odense S | Denmark
Tel. +45 7022 7292 | www.coolsplash.dk | VAT DK 66212319