



NO TOOLS REQUIRED
 Aucun outil nécessaire
 No necesita herramientas
 kein Werkzeug notwendig
 Geen gereedschap nodig
 Attrezzi non necessari



SETUP TIME
 Temps de montage
 Tiempo de montaje
 Montagezeit
 Montagetijd
 Tempo di montaggio

ITEM • Article • Artículo • Artikel • Artikel • Prodotto

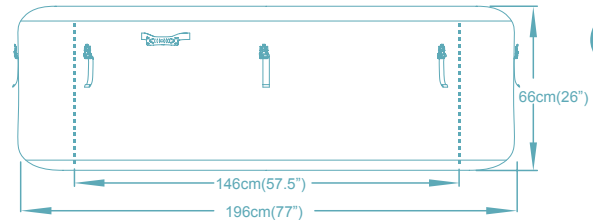
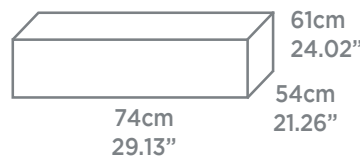
54148

196 x 66 cm
 77" x 26"

TM LAY-Z-SPA™ PARIS

6942138933215

39.81kg
 87,77lb



80%
 806 L
 213 gal.

MATERIAL • Matériel • Material • Material • Materiaal • Materiale



LEATHER TEXTURE
 Texture cuir
 Textura de cuero
 Ledertextur
 Leerstructuur
 Eco-pelle



STURDY I-BEAM CONSTRUCTION
 Construction robuste I-Beam
 Estructura I-Beam resistente
 Stabile doppel-t-trägerkonstruktion
 Stevige i-balk constructie
 Robusta costruzione I-Beam



PVC LINER
 Liner en pvc
 Revestimiento interior de pvc
 Pvc auskleidung
 Pvc-bekleding
 Telo piscina in pvc



FOAM BOTTOM
 Dessous mousse
 Parte inferior de espuma
 Schaumstoffboden
 Schuimbodem
 Fondo in schiuma

FEATURES • Caractéristiques • Características • Eigenschaften • Kenmerken • Caratteristiche



WATER FILTRATION
 Filtration de l'eau
 Filtrado de agua
 Wasserfiltrung
 Waterfiltratie
 Filtrazione



AIRJET™ MASSAGE SYSTEM
 Système de massage Airjet™
 Sistema de masaje Airjet™
 Airjet™ massage system
 Airjet™ - massage systeem
 Sistema di massaggio Airjet™



POWER SAVING TIMER
 Minuterie d'économie d'énergie
 Temporizador de ahorro de energía
 Energiepar-timer
 Energiebesparende timer
 Timer risparmio energetico



LED SYSTEM
 Système de led
 Sistema led
 Led-system
 Led-systeem
 Sistema a led



MAXIMUM TEMPERATURE
 Température maximale
 Temperatura máxima
 Höchsttemperatur
 Maximum temperatuur
 Temperatura massima



HEATING
 Chauffage
 Calefacción
 Heizfunktion
 Verwarming
 Riscaldamento



WIRELESS LED REMOTE CONTROL
 Télécommande led sans fil
 Control remoto led inalámbrico
 Fernbedienung
 Draadloze led-afstandsbediening
 Telecomando led wireless

INCLUDES • Inclus • Incluye • Inhalt • Bevat • Include



DVD



CARTRIDGE
 Cartouche
 Cartucho
 Kartusche
 Filter
 Cartuccia

#58323



GROUND CLOTH
 Tapis de sol
 Esterilla para el suelo
 Bodenplane
 Grondzeil
 Tappeto base



INFLATABLE COVER
 Bâche gonflable
 Cubierta inflable
 Aufblasbare abdeckung
 Opblaasbare afdekhoes
 Copertura gonfiabile



CHEMICAL FLOATER
 Floteur chimique
 Flotador químico
 Chemikalienschwimmer
 Chemische floater
 Gallegiante chimico



for your local contact please go to:
www.bestwaycorp.com

 (+45) 69 91 15 76

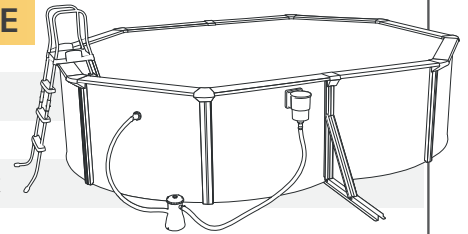
 service@bestwaycorp.dk

MÅLSÆTNING FOR VORES AFTER SALES SERVICE

- Hjælpe forbrugere og forhandlere
- Hjælpe kunder med deres spørgsmål om deres defekte produkter

PRODUKTER DER ER OMFATTET AF AFTER SALES SERVICE

- | | |
|------------------------------------|--------------------------------------------------------|
| • Fast Set™ poolset | • Flowclear™ chlorinator |
| • Rammepool | • Splash in shade Play poolset |
| • Filter pumper | • Hydrium™ Steel Wall poolset |
| • Sandfilter | • Hydrium™ Splasher poolset |
| • El-pool varmer | • Stående padling |
| • Lay-Z-Spa™ set | • Hydro-Force både (65046, 65047, 65048, 65049, 65050, |
| • Lay-Z-Spa™ underholdningsstation | 65053, 65062, 65064) |
| • Sierra Ridge Air telt | • Elektromotorer (65043, 65045) |



TRE TRIN TIL AFTER SALES SERVICE

1

KLARGØR DOKUMENTATION

Nødvendige dokumentation for oprettelse af en reklamation er følgende:

- 1) Udfyldt garantibevis (findes i brugervejledningen)
- 2) Kopi af købskvittering (MEGET VIGTIGT)
- 3) Billede af den defekte del. I visse tilfælde kan det være nødvendigt at sende den defekte del til After Sales Service.
BEMÆRK: KUN DEFEKTE DELE UDSKIFTES
- 4) Serienummer på den defekte del.

2

SEND REKLAMATION

Reklamationen sendes via fax eller e-mail til Bestway After Sales Center. Gå til www.bestwaycorp.com for at finde nærmeste After Sales Center.

3

BEHANDLING AF REKLAMATION

Når reklamationen er godkendt sendes de nye dele til postadressen på garantibeviset. Forsendelsen ankommer i løbet af 4-5 arbejdsdage forudsat den indsendte dokumentation er korrekt udfyldt.



ÅBNINGSTIDER: 24 timer i døgnet året rundt



Lay-Z-Spa™

The Comfortable, Affordable, Go-Anywhere Spa!™

14-Steps to Maintain Your Lay-Z-Spa™

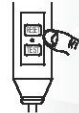
Congratulations on the purchase of your new Lay-Z-Spa™. Before operating the Lay-Z-Spa™ be sure to follow these 14 steps. Damage resulting from misuse is not covered by the manufacturer's warranty.

1



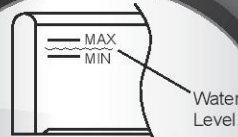
The Lay-Z-Spa™ should not be setup or left out in temperatures lower than 4°C (40°F).

2



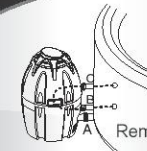
The PRCD must be tested before each use.

3



Fill the water level between maximum and minimum printed on the SPA wall.

4



Remove Stopper Caps
Ensure water is circulating between the Spa and the Pump and that the Stopper Caps have been removed.

5



Be sure to set your desired temperature.

11



Hibernate Function:

After 72 hours of operation (except timer function), the pump will hibernate and "END" will be display on the LED. When the pump is hibernating both the rapid heating and water filtration functions are disabled. To re-activate the pump simply press any button on the control panel.



12

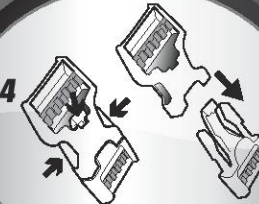
IMPORTANT NOTICE:
This unit will auto lockout after 5 minutes of inactivity. To simply place a finger over function button for 3 seconds.

13



We recommend you take a shower before using your Lay-Z-Spa, as cosmetic products, lotions, and other residues on the skin can quickly degrade water quality.

14



10



All Spas require the use of chemicals in order to keep the water clear and safe.

9



If the pump not heating properly, please press the thermal cut-out manual "Reset" button on the pump.

8



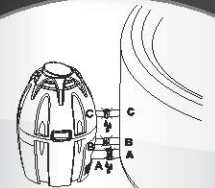
Change the Filter Cartridges regularly

7



Clean and maintain the Filter Cartridge regularly.

6



Check and ensure the Spa and 3 adapters are not leaking.

Lay-Z-Spa™

The Comfortable, Affordable, Go-Anywhere Spa!™

Maintaining Spa Water

Proper disinfection and filtration of spa water kills harmful micro-organisms, removes oils, make up, lotion and ensures the water is clean and safe.

Spa water quality can be extremely hazardous to your health. We recommend you do the following points:

- A. Clean filter cartridges every day and change filter cartridges every week depending on use.
- B. Change water regularly and use appropriate Spa pool chemicals. We recommend "Clearwater" chemicals.

NOTE: When performing chemical maintenance, activate the Lay-Z-Massage function to quickly dissolve chemicals into the water.

NOTE: Remove the chemical floater from spa when the spa is in use.

All spas require the use of pool chemicals. Pool chemicals are potentially toxic and should be handled with care. There are serious health risks from chemical vapors and the incorrect labeling and storage of chemical containers. Please consult your local pool supply retailer for more information about chemical maintenance. Pay close attention to the chemical manufacturer's instructions. Spa damage resulting from misuse of chemicals and mismanagement of spa water is not covered by the warranty.

1. Water Balance

We recommend maintaining your water pH between 7.4 and 7.6, total alkalinity between 80 and 120ppm and free chlorine between 2 to 4ppm. Purchase a test kit to test your water chemistry before using the spa and continue to test the water no less than once a week. Low pH will cause damage to the spa and pump. Damage resulting from chemical imbalance is not covered by the warranty.

2. Water Sanitation

The spa owner must regularly maintain pool water with scheduled maintenance (daily if necessary).

Note: Sanitizers chemically control bacteria and viruses present in spa water.

3. The Bestway Lay-Z-Spa is supplied with a chemical floater.

Please note: this is supplied for use with chemical tablets only. Do not use granules.

Lay-Z-Spa™ Xtras



58317
Pillows

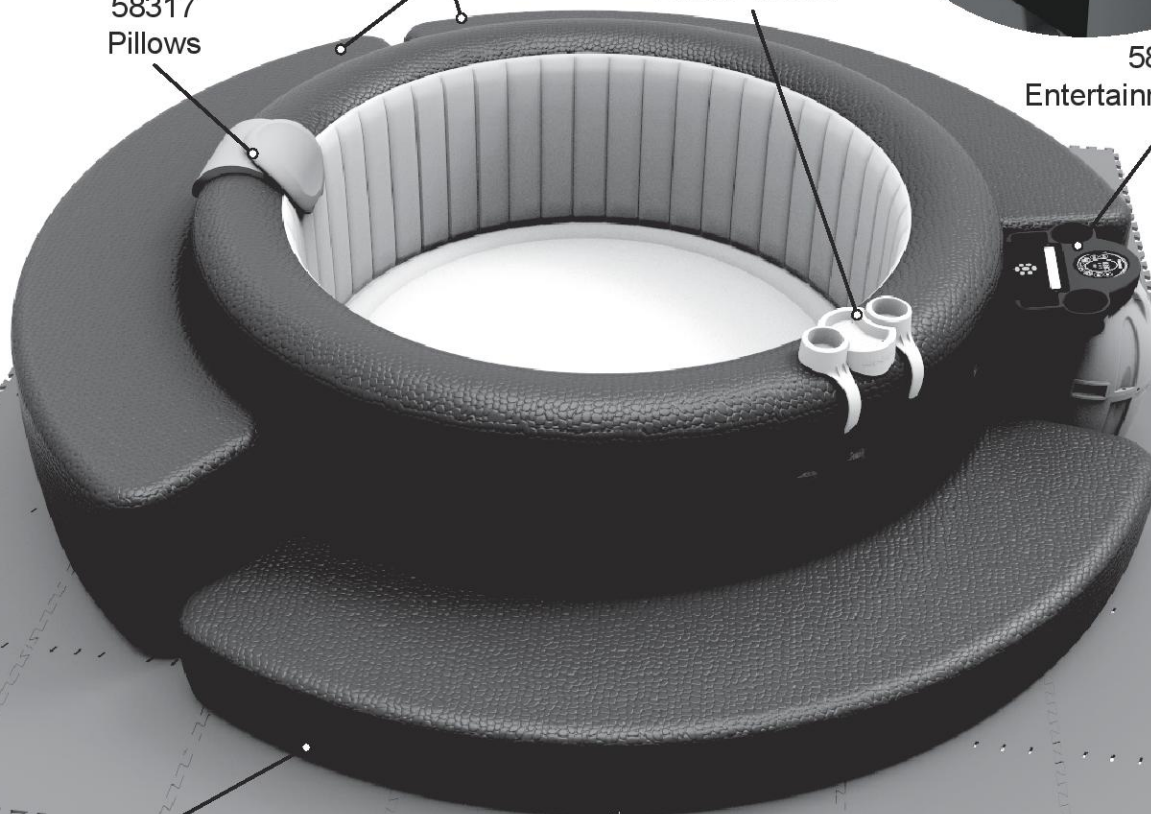
58432
Surround



58416
Drinks Holder



58434
Entertainment Station



58436
Step

58220 50cm x 50cm
Floor Protector

58265 81cm x 81cm
Floor Protector

Cleaning



58427
PowerCell VAC



58340
Aqua Scan



58421
All in one Tool Set



58142
3 in 1
Test Strip



58247
5 in 1
Test Strip



58323
Filter Cartridge VI